


# Gweunydd Blaencleddau

Map 1 / 1 Cód Safle y GE EC Site Code **UK0030144**

 **Ardal Cadwraeth Arbennig (ACA)**  
**Special Area of Conservation (SAC)**

Arwynebedd cyfan **150.11 ha**  
**Total area**

Hydred **04° 41' 11"** Gorllewin **West**  
**Longitude**  
 Lledred **51° 57' 14"** Gogledd **North**  
**Latitude**



N.G. Mae'r ffigurau Lledred/Hydred i gyd wedi deillio o System Geodesig y Byd 84 (WGS 84)

N.B. All Latitude/Longitude figures have been derived from World Geodetic System 84 (WGS 84).

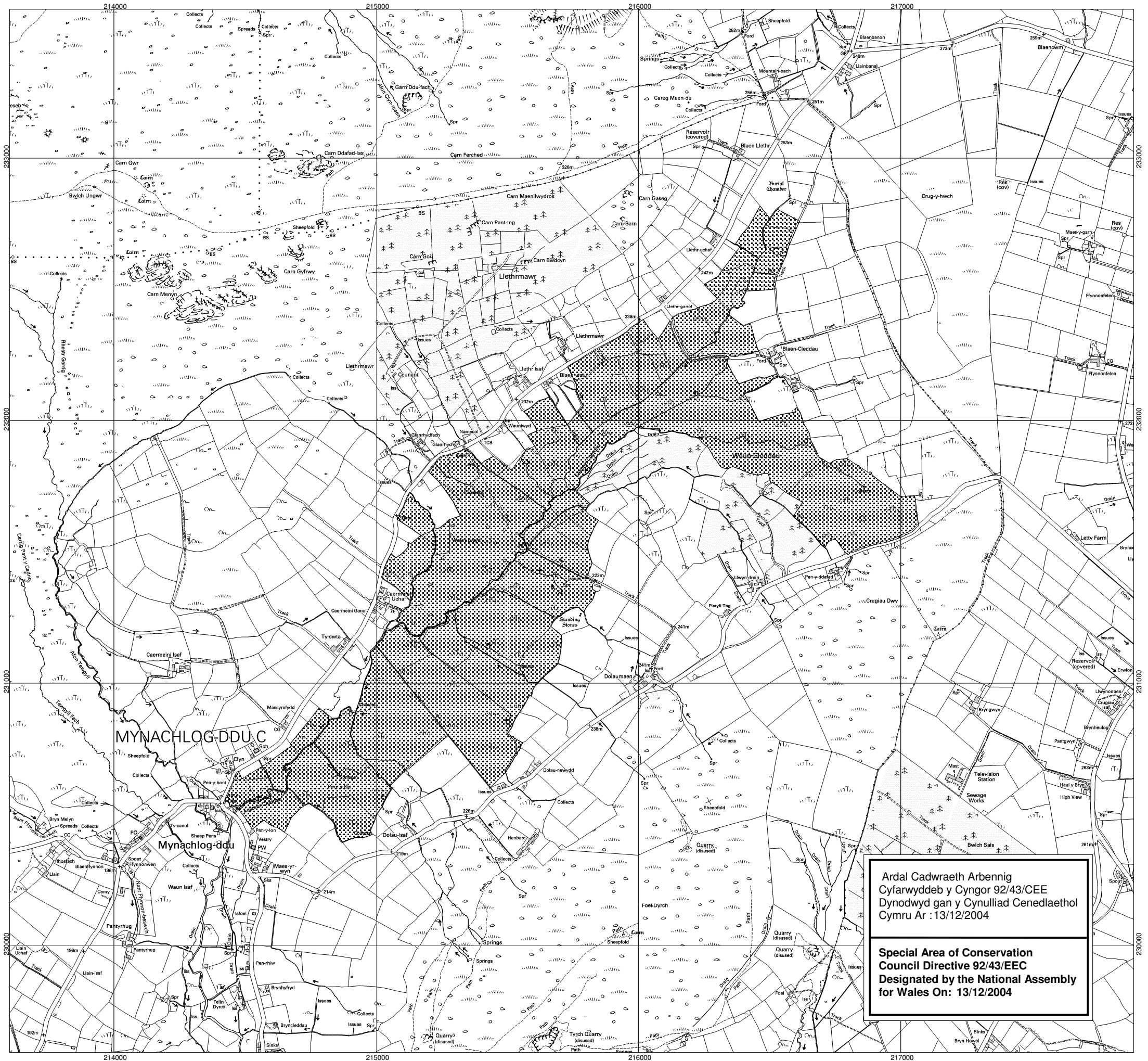
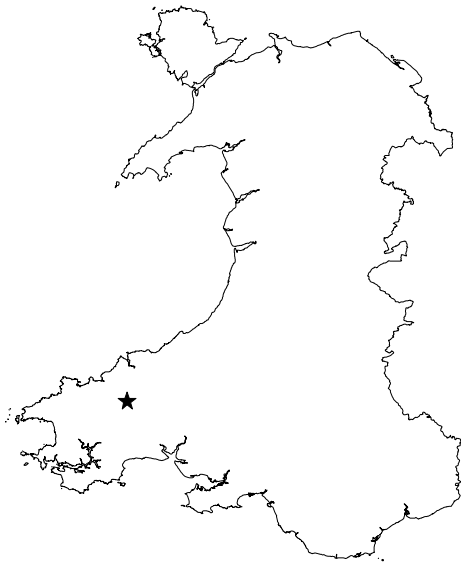
Tafluniad map: Y Grid Cenedlaethol Prydeinig  
**Projection: British National Grid**

Rhif diweddaraf **4** **17/02/2005**  
**Version number**

Graddfa **1 : 15,000**  
**Scale**

Noder: Data wedi ei gipio ar raddfa 1:2,500, rhoddwyd ar raddfa 1:10,000 a'i leihau i raddfa 1:15,000. Mae mapiau graddfa-fawr swyddogol ar gael gan CCGC.  
**Note: Data captured at 1:2,500 scale, placed on 1:10,000 scale and reduced to 1:15,000. A definitive large scale map is available on request from CCW.**

Atgynhychir y map hwn o ddiaryddi yr Arolwg Ordnans gyda chaniatâd Arolwg Ordnans ar ran Rheolwr Llyfrfa Ei Mawrddi @hawfrait y Goron. Mae atgynhychu heb ganiatâd yn torri hawfrait y Goron a gall hyn arwain at erlyriad neu achos sifil. Rhif trwydded Cynor Cefn Gwlad Cymru 100018813 17/02/2005  
 This map is reproduced from Ordnance Survey material with the permission of Ordnance Survey on behalf of the Controller of Her Majesty's Stationery Office © Crown copyright. Unauthorised reproduction infringes Crown copyright and may lead to prosecution or civil proceedings. Countryside Council for Wales Licence No. 100018813 17/02/2005



**Ardal Cadwraeth Arbennig**  
 Cyfarwydddeb y Cynor 92/43/CEE  
 Dynodwyd gan y Cynulliad Cenedlaethol  
 Cymru Ar : 13/12/2004

**Special Area of Conservation**  
 Council Directive 92/43/EEC  
 Designated by the National Assembly  
 for Wales On: 13/12/2004