

## Natural Resources Wales

- The monthly rainfall total received for Wales during August was 107% of the Long Term Average (LTA, 1961-90). South East, South West and North Wales received 117%, 99% and 106% of the LTA, respectively.
- At the end of August, soil moisture deficit (SMD) values across Wales were between 1.9 and 115mm for all MORECS squares. The difference when compared to the long term average August (1961-90), ranged from -28.1mm (wetter) to 39.0mm (drier).
- For river flows in Wales, 19 out of 30 indicator sites which had flow data were classed as *Normal* for August. 10 sites were classed as *Above normal* and the remaining 1 site was classed as *Below normal*.
- The overall reservoir storage across all indicator sites was greater than 85% full at the end of August and all reservoirs were within normal operating ranges.

### Rainfall\*

The monthly rainfall total received for Wales was 107% of the LTA for August. The percentage of rainfall recorded in catchments compared with the long term average (1961-90) across Wales was between 75% (Dee) and 128% (Dysynni). The rainfall total for Wales was 7mm more than the August LTA. For South East, South West and North Wales the rainfall totals were 117%, 99% and 106% of the LTA, respectively.

Rainfall Map [National](#)

Rainfall Charts [National & Areas](#) [South East Wales](#) [North Wales](#) [South West Wales](#)

\* using NCIC (National Climate Information Centre) data (Source: Met Office © Crown Copyright)

### Soil Moisture Deficit/Recharge

The 23 MORECS squares had SMD values between 1.9 and 115mm. 16 out of 23 squares had SMD values which were less than the long-term average (wetter) and only 7 squares had SMD values which were greater than the long-term average (drier)

SMD Map [National](#)

SMD Charts [Compare to LTA](#)

All data are provisional and may be subject to revision.

The views expressed in this document are not necessarily those of the Natural Resources Wales. Its officers, servants or agents accept no liability for any loss or damage arising from the interpretation or use the information, or reliance upon views contained herein.

## River Flows

River flows at 19 sites (out of 30 sites which had flow data ) were classed as *Normal*. 10 sites were classed as *Above normal* and the remaining 1 site was classed as *Below normal*.

**North:** Flows in the area ranged from 61% (River Ceiriog at Brynkinalt Weir) to 127% (River Conwy at Cwmlanerch) of the August LTA Values.

**South East:** Flows in the area ranged from 53% (River Lugg at Butts Bridge) to 150% (River Ely at St Fagans) of the August LTA values.

**South West:** The river flows within this area ranged from 63% (River Teifi at Glanteifi) to 167% (River Ewenny at Keepers Lodge) of the August LTA values.

River Flow Map            [National](#)  
River Flow Table        [% of LTA and compare to previous year](#)  
River Flow Charts       [South East Wales](#)   [North Wales](#)   [South West Wales](#)

## Groundwater Levels

Groundwater levels for August at all indicator sites (10 sites) were classed between *Below normal* (Eastwick and Greenfield Garage) and *Exceptionally high* (Hollybush). 5 sites were classed as *Normal* (Pant-y-Lladron, Fernbank, Pont y Cambwll, Handley and Broxton Obs) and the two remaining sites were classed as *Above normal* (Llanfair DC Obs and Dodleston Obs).

Groundwater Map        [National](#)  
Groundwater Charts     [South East Wales](#)   [North Wales](#)   [South West Wales](#)

## Reservoir Storage

At the end of August most of the indicator reservoirs (14 out of 18) were greater than 85% full.

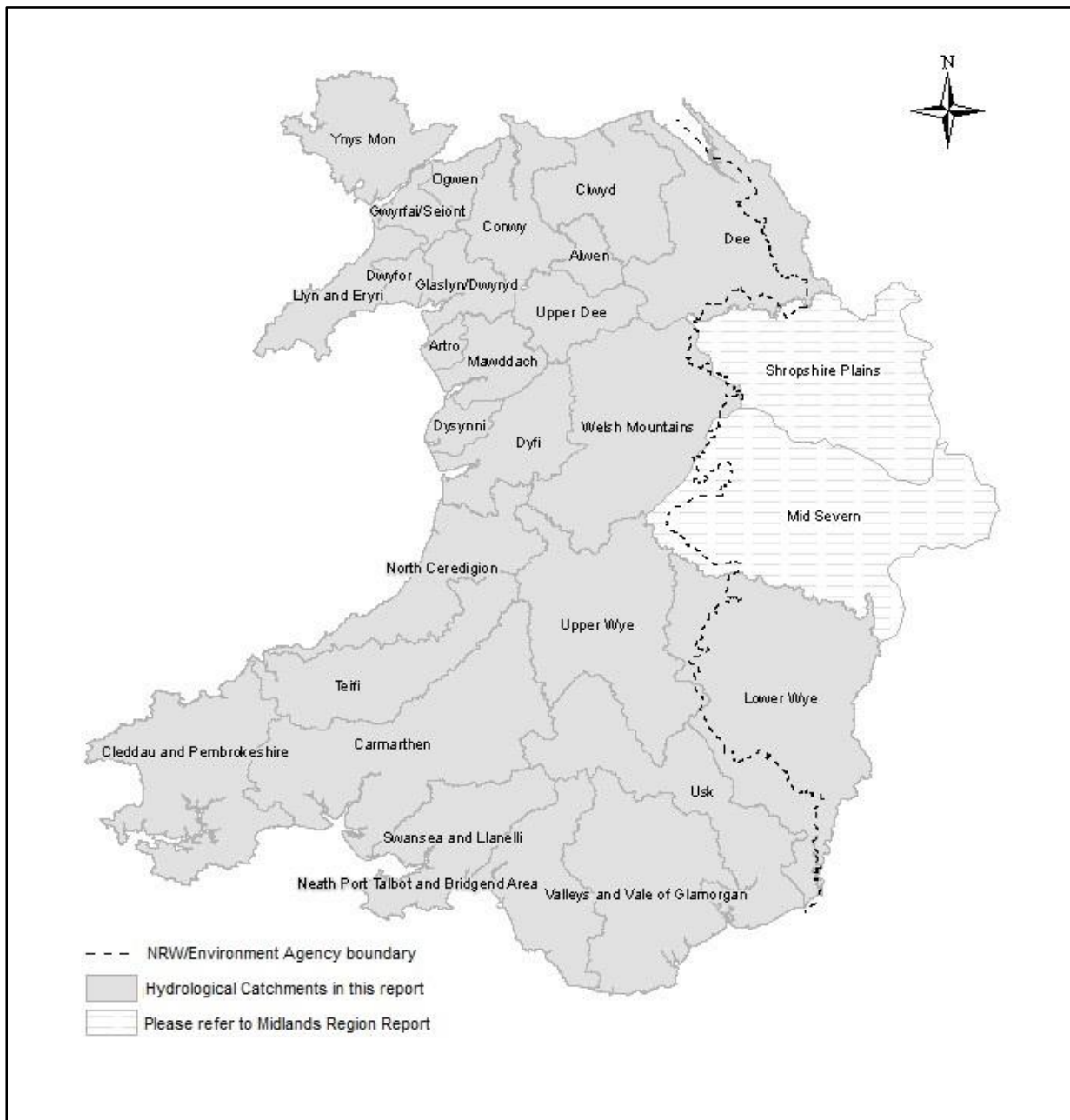
Reservoir Charts        [South East Wales](#)   [North Wales](#)   [South West Wales](#)

All data on Water Situation Reports are provisional, based on spot readings, and are subject to revision.

Author: Zhong Zhang Telephone: 03000 654521

[Return to Summary](#)

## Natural Resources Wales



**Figure 1: The Natural Resources Wales Water Situation Report features sites in the catchments shown. Parts of the Shropshire Plains and Mid Severn catchments are within Wales. For full information on these catchments, please see the Environment Agency Midlands Water Situation Report.**

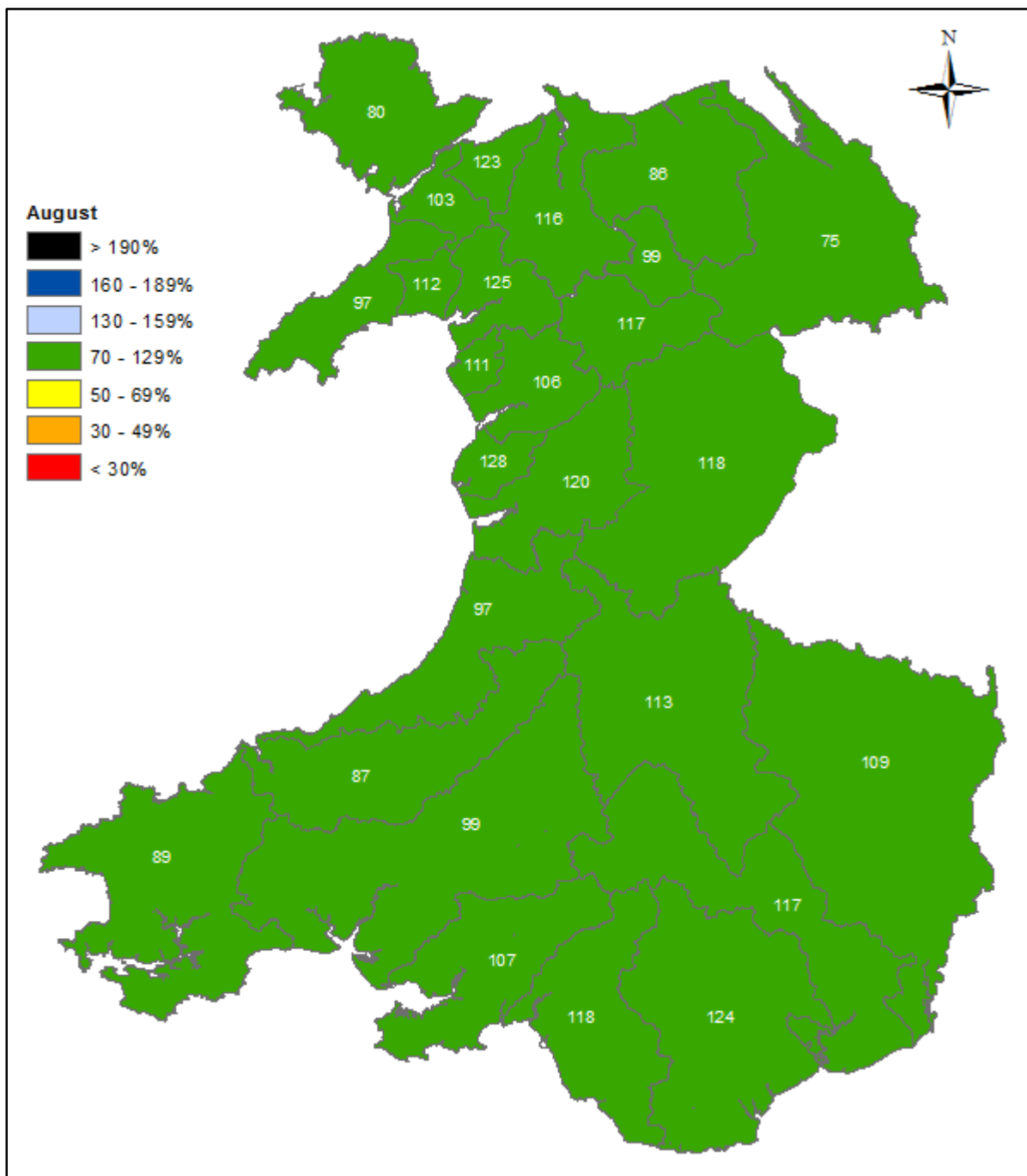
**For areas adjoining Natural Resources Wales, please see the reports for Environment Agency Midlands and North West England:**

[Environment Agency - Midlands, England Water Situation Report](#)  
[Environment Agency - North West, England Water Situation Report](#)

All data are provisional and may be subject to revision.

The views expressed in this document are not necessarily those of the Natural Resources Wales. Its officers, servants or agents accept no liability for any loss or damage arising from the interpretation or use the information, or reliance upon views contained herein.

## Rainfall



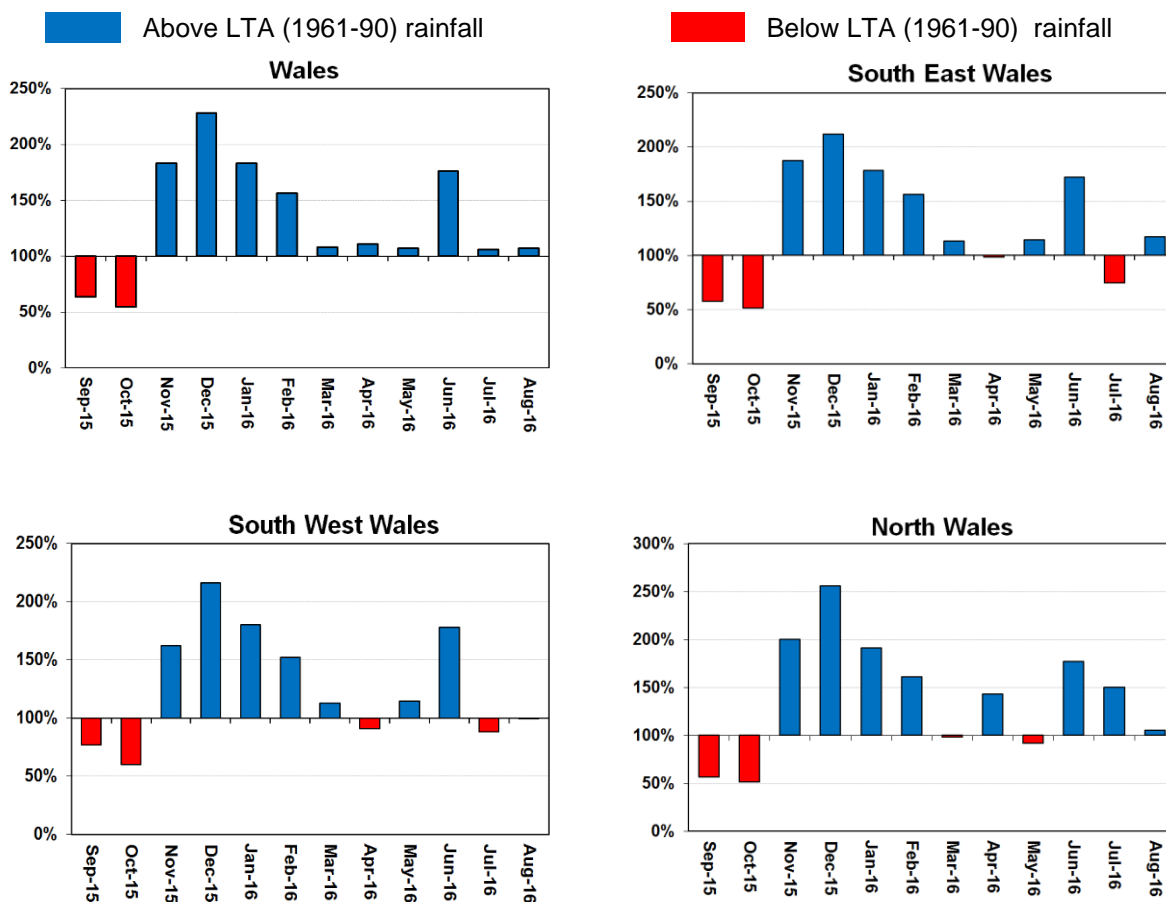
**Figure 2: Calculated catchment average August rainfall totals as a percentage of the 1961-90 August long term average for Natural Resources Wales catchments, using NCIC (National Climate Information Centre) data (Source: Met Office © Crown Copyright).**

All data are provisional and may be subject to revision.

The views expressed in this document are not necessarily those of the Natural Resources Wales. Its officers, servants or agents accept no liability for any loss or damage arising from the interpretation or use the information, or reliance upon views contained herein.

## Rainfall Charts

Figure 3: Rainfall Charts: National and Areas

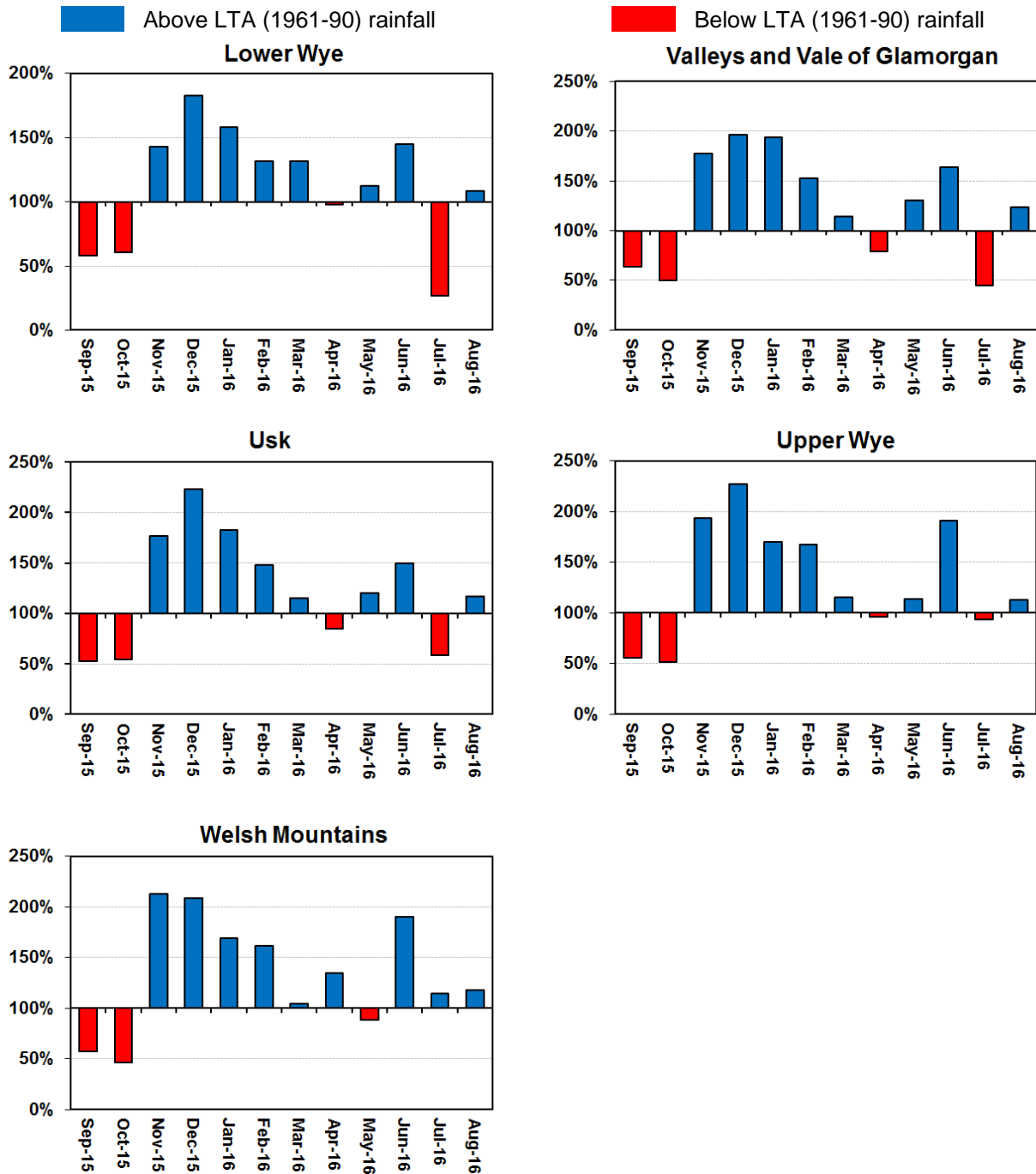


Comparison of monthly rainfall totals to the 1961-90 long term average expressed as percentage for Natural Resources Wales and Areas, using NCIC (National Climate Information Centre) data (Source: Met Office © Crown Copyright).

All data are provisional and Jul be subject to revision.

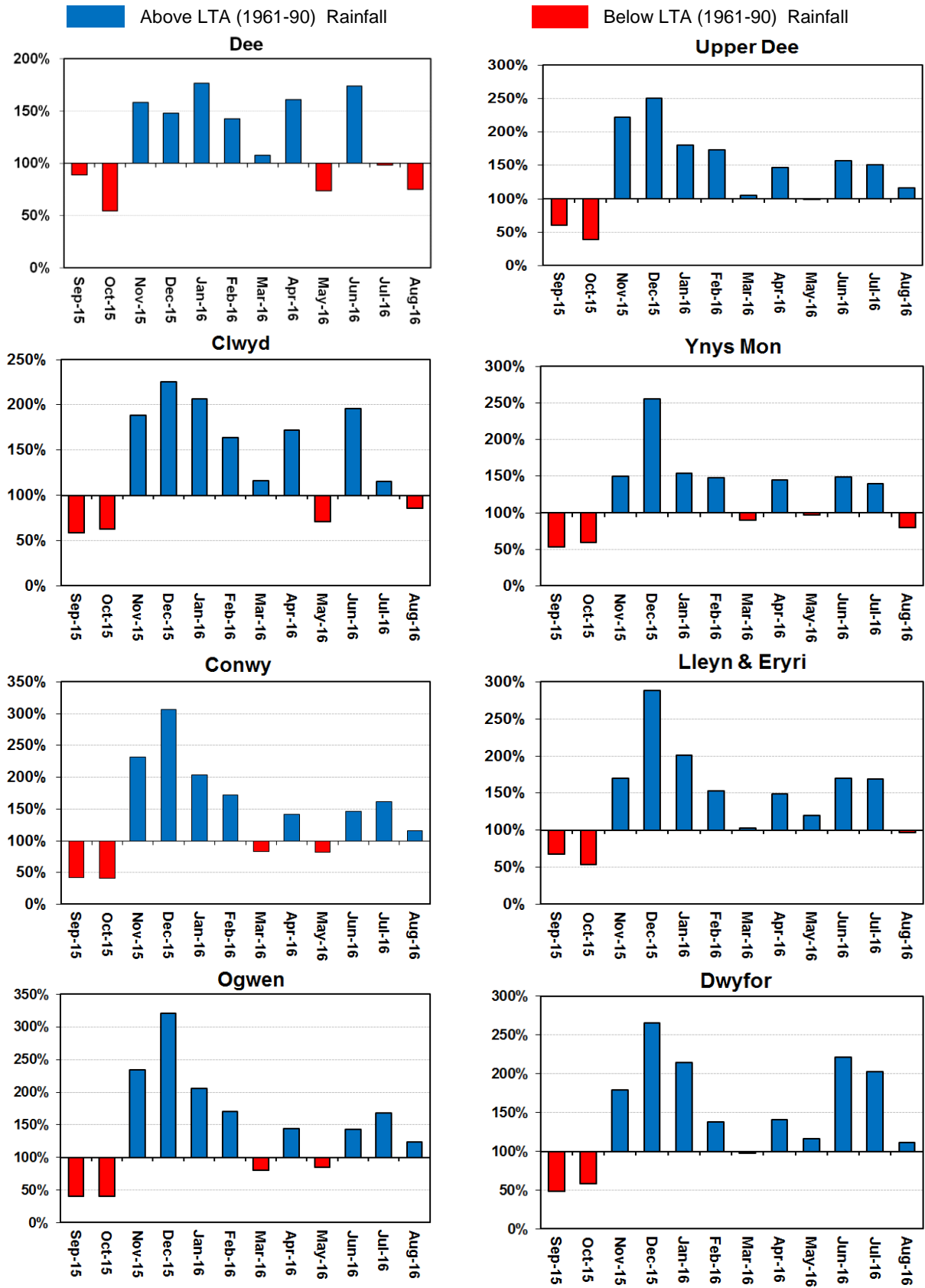
The views expressed in this document are not necessarily those of the Natural Resources Wales. Its officers, servants or agents accept no liability for any loss or damage arising from the interpretation or use the information, or reliance upon views contained herein.

**Figure 4: Rainfall Charts: South East Wales**



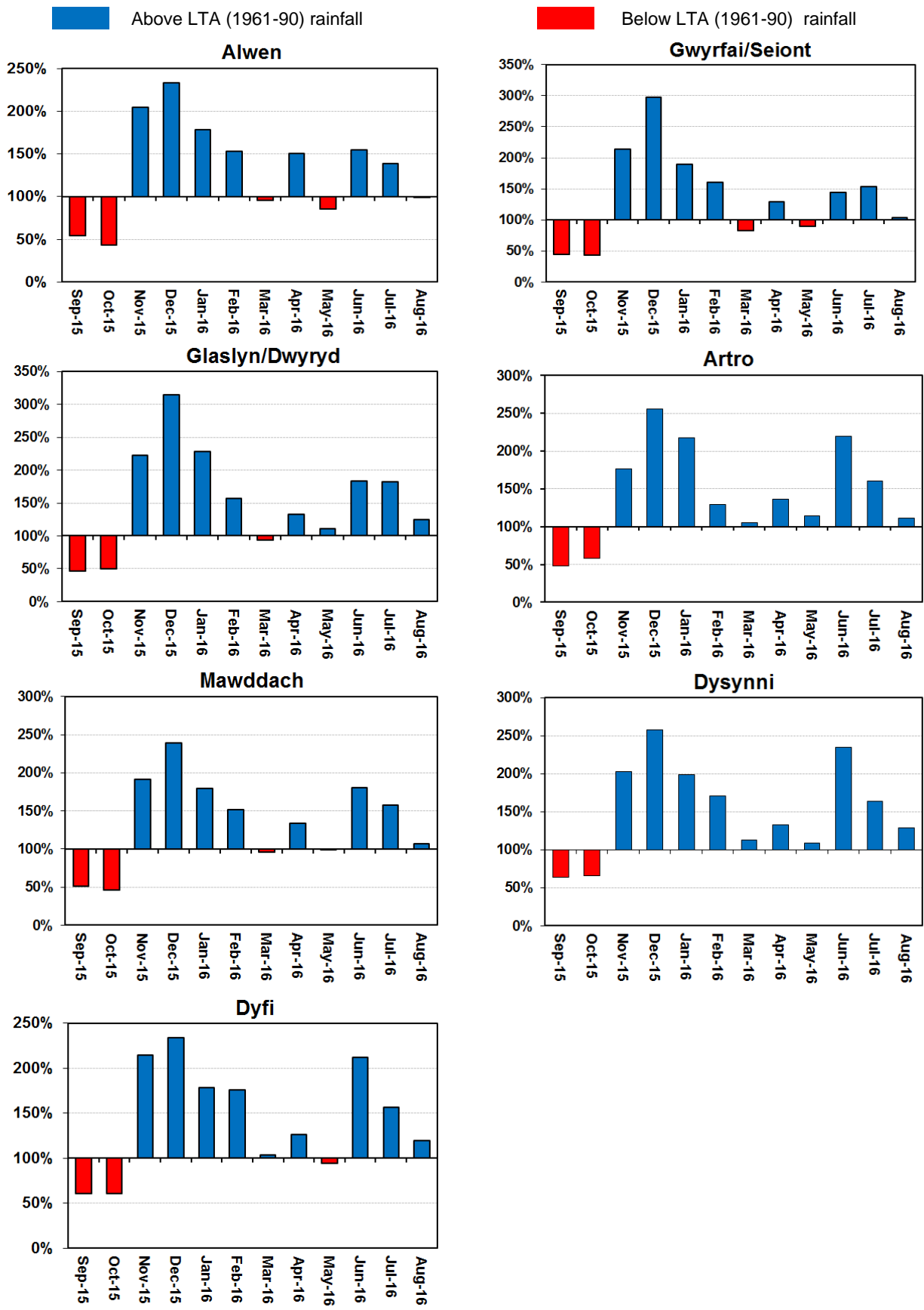
Comparison of monthly rainfall totals to the 1961-90 long term average expressed as percentage for South East Wales, using NCIC (National Climate Information Centre) data (Source: Met Office © Crown Copyright).

**Figure 5: Rainfall Charts: North Wales**



Comparison of monthly rainfall totals to the 1961-90 long term average expressed as percentage for North Wales, using NCIC (National Climate Information Centre) data (Source: Met Office © Crown Copyright).

[Return to Summary](#)

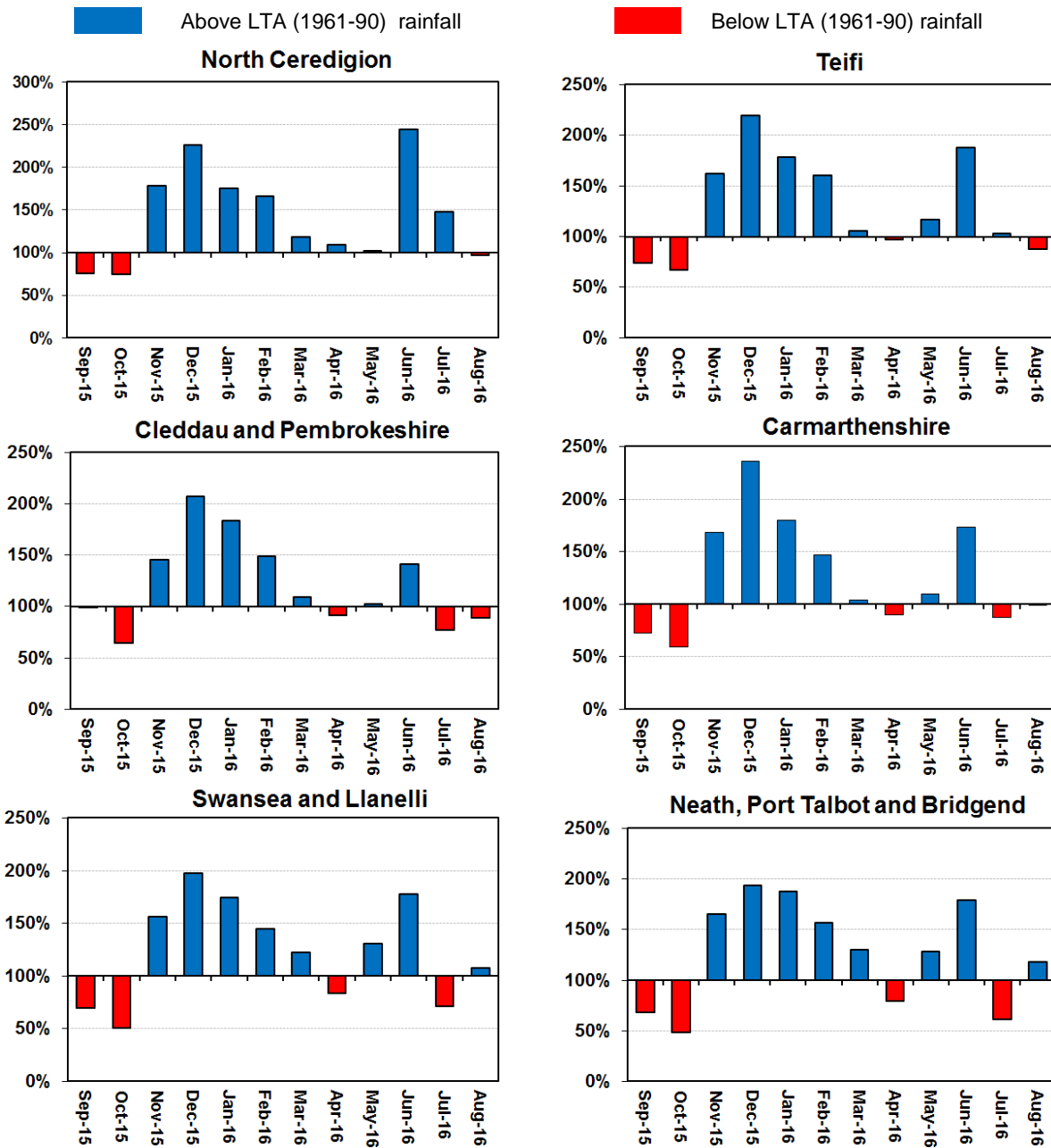


Comparison of monthly rainfall totals to the 1961-90 long term average expressed as percentage for North Wales, using NCIC (National Climate Information Centre) data (Source: Met Office © Crown Copyright).



[Return to Summary](#)

**Figure 6: Rainfall Charts: South West Wales**



Comparison of monthly rainfall totals to the 1961-90 long term average expressed as percentage for South West Wales, using NCIC (National Climate Information Centre) data (Source: Met Office © Crown Copyright).

## Soil Moisture Deficit (SMD)

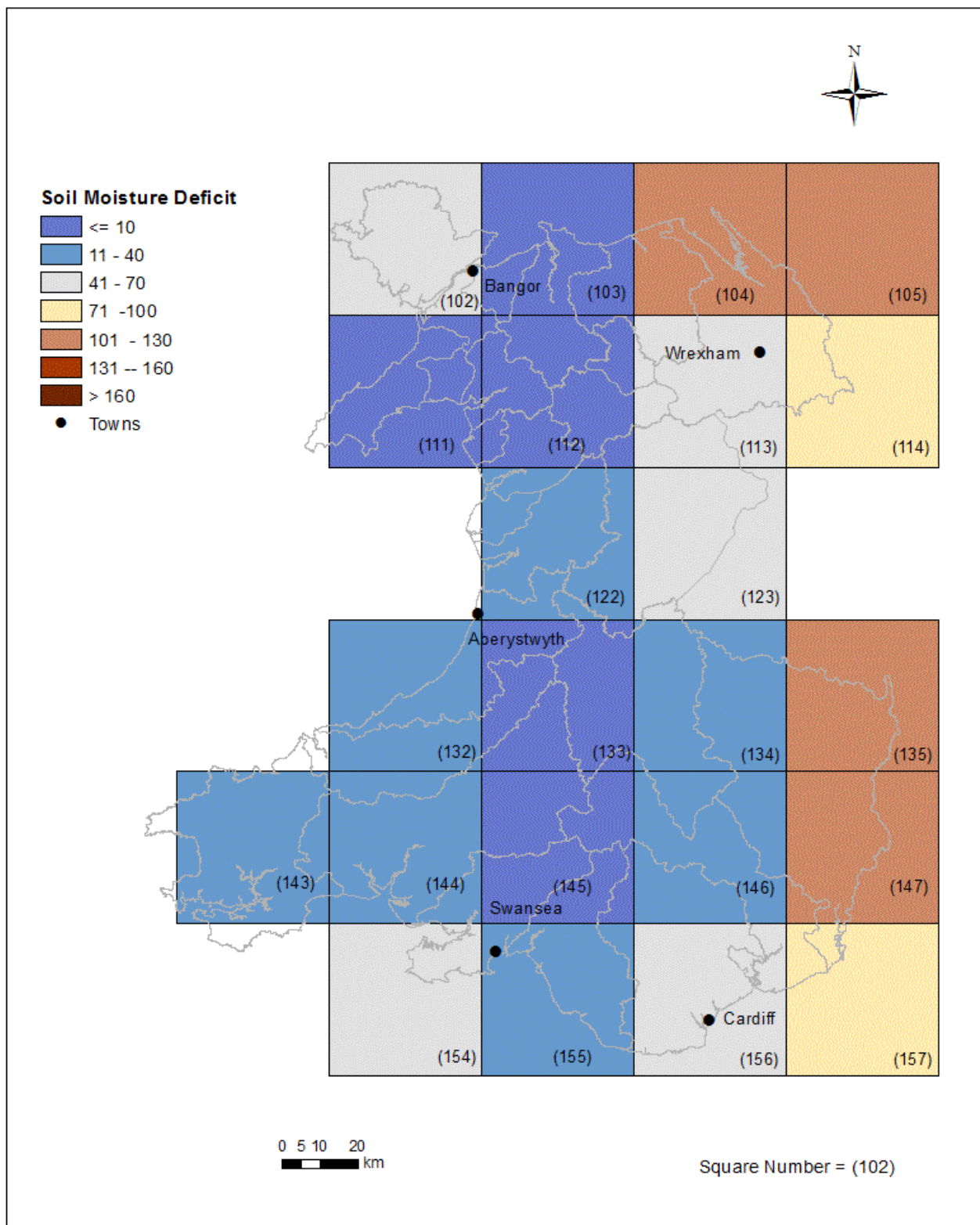


Figure 7: MORECS soil moisture deficits (mm) for August for real land use for Natural Resources Wales (Source: Met Office © Crown Copyright).

[Return to Summary](#)

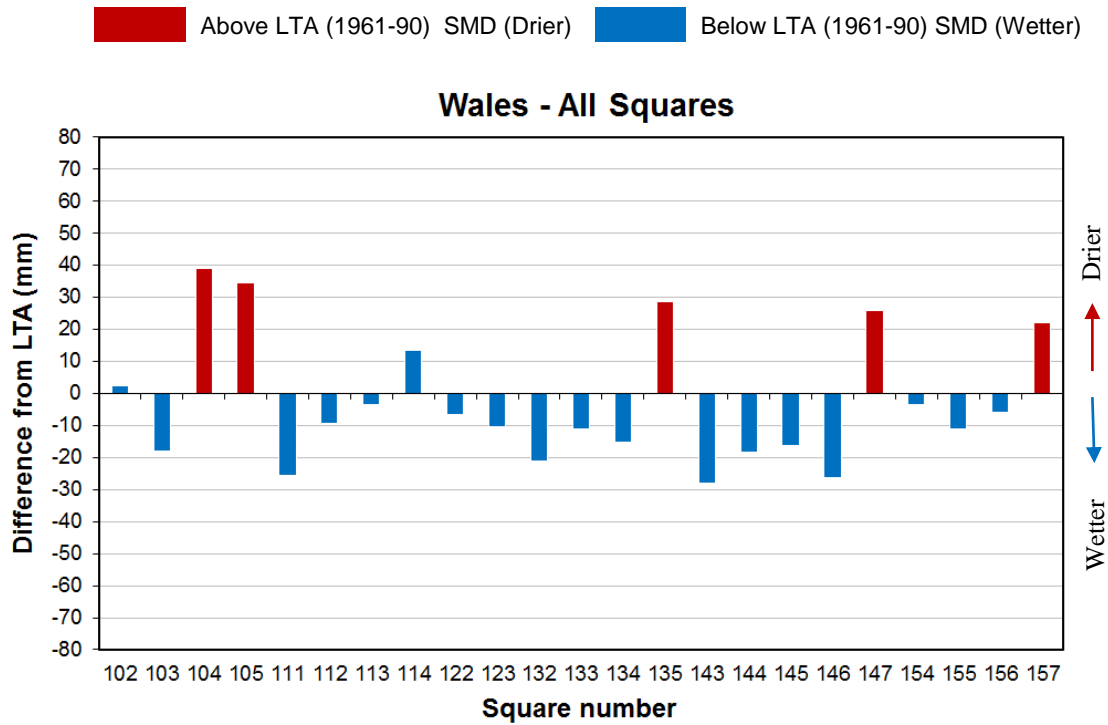


Figure 8: MORECS month end soil moisture deficits difference (mm) from the 1961-90 long term monthly average (LTA) for July for real land use for Natural Resources Wales squares (Source: Met Office © Crown Copyright).

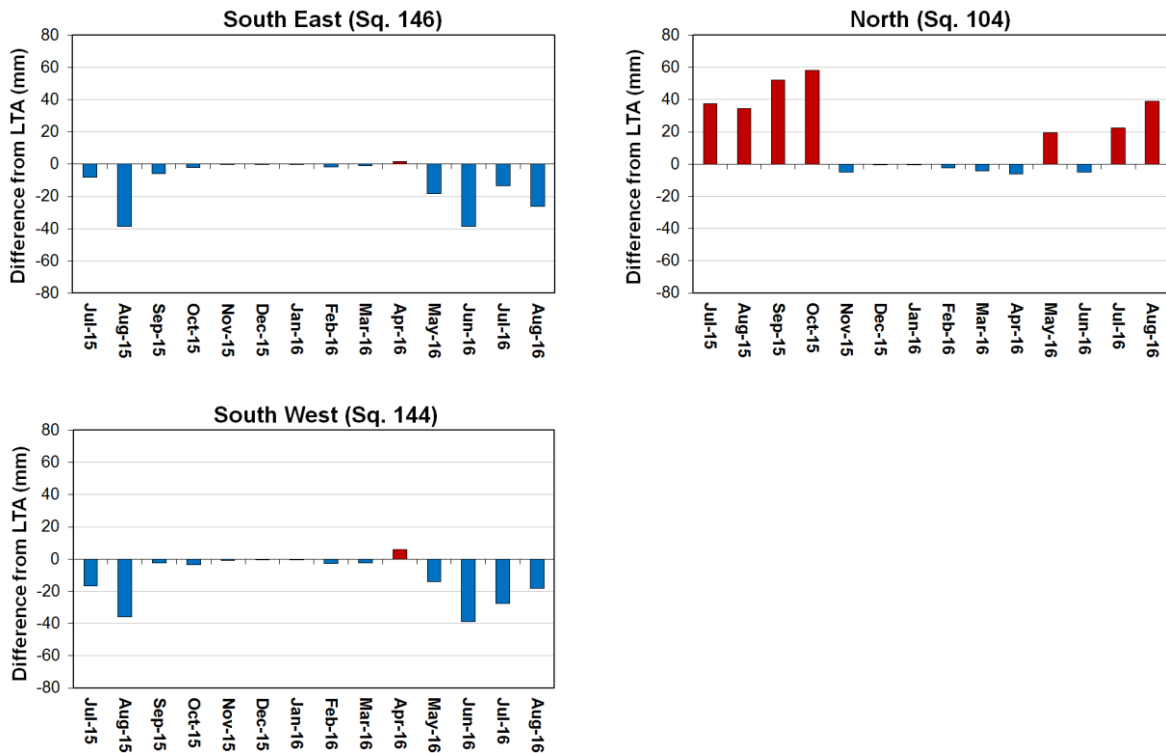


Figure 9: MORECS month end soil moisture deficit difference (mm) from the 1961-90 long term monthly average (LTA) for real land use for South East, North and South West (Source: Met Office © Crown Copyright). (Note: no LTA available for Natural Resources Wales)

## River Flow

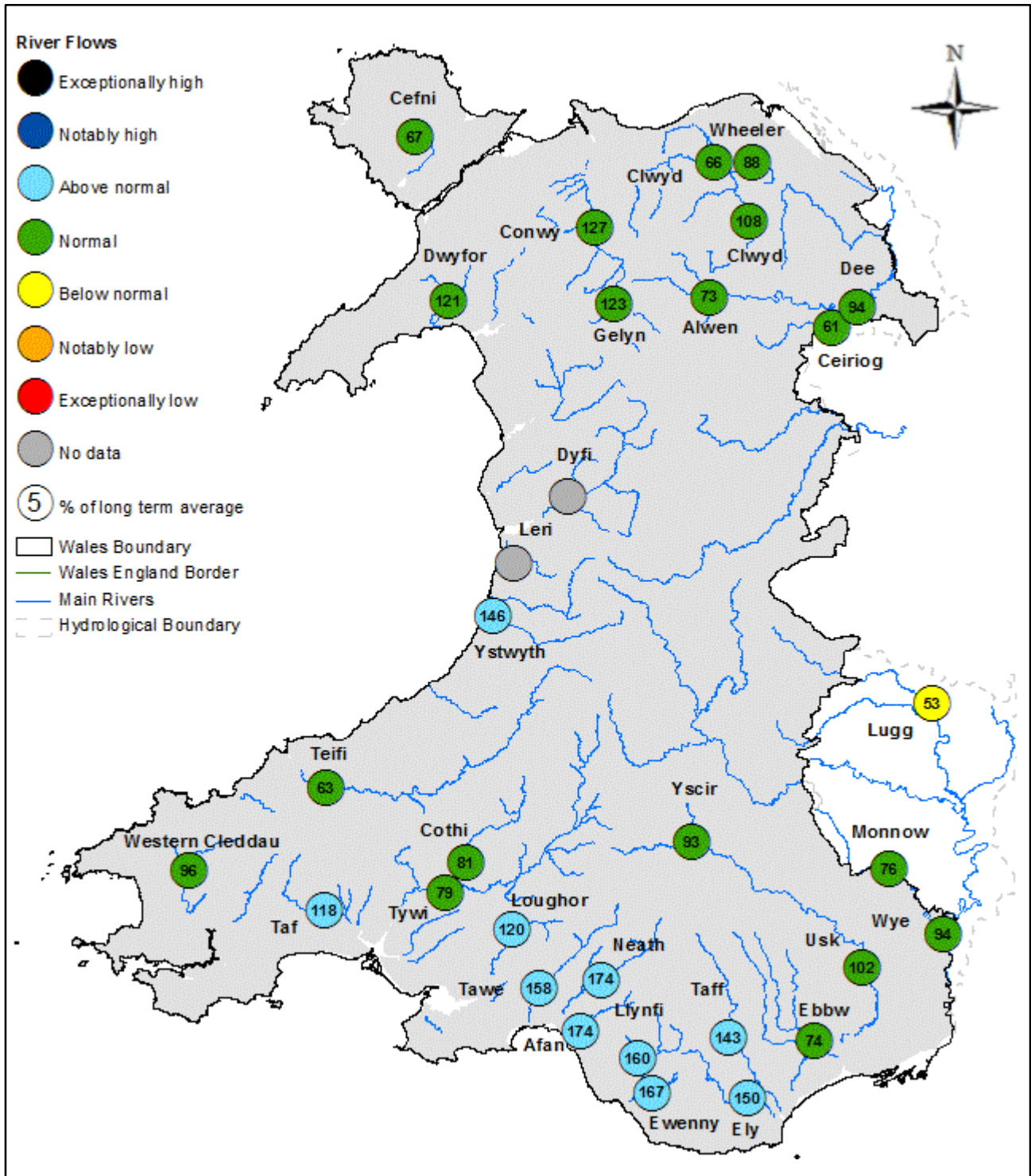


Figure 10: Monthly mean river flow for August, classed relative to analysis of historic August monthly means (Source: Natural Resources Wales).

[Return to Summary](#)

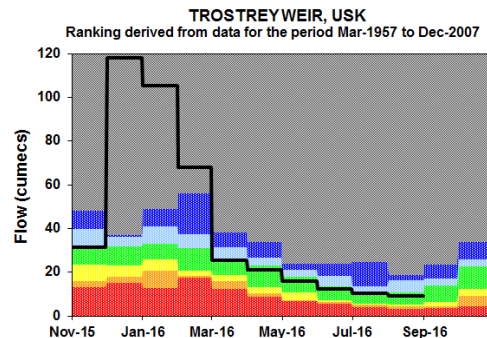
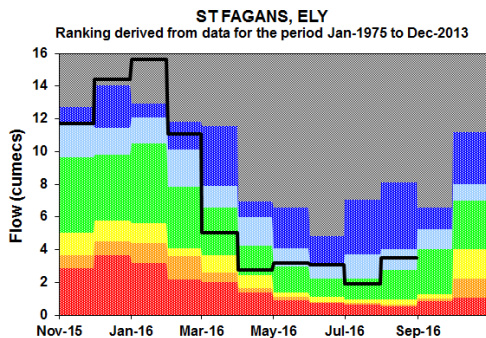
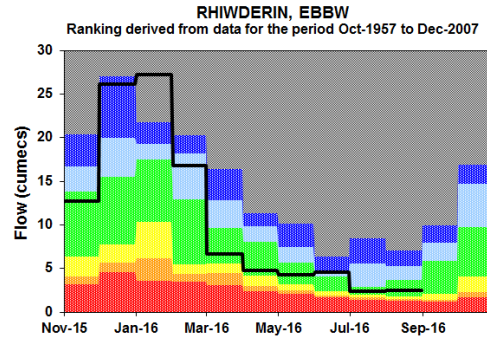
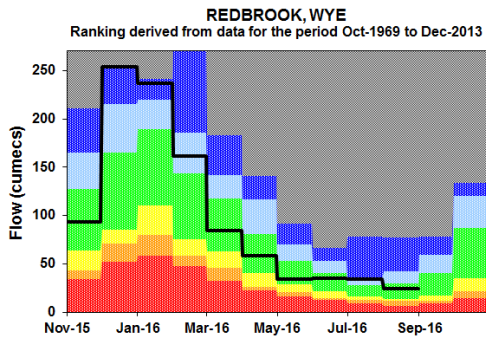
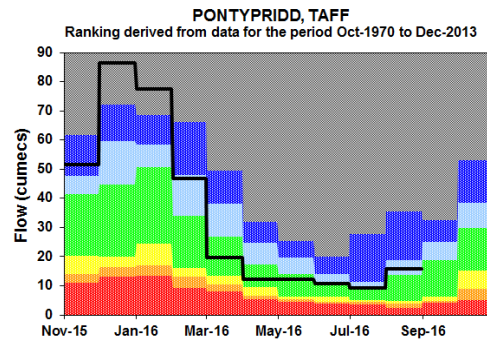
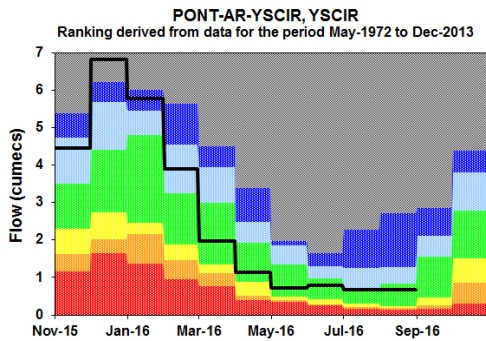
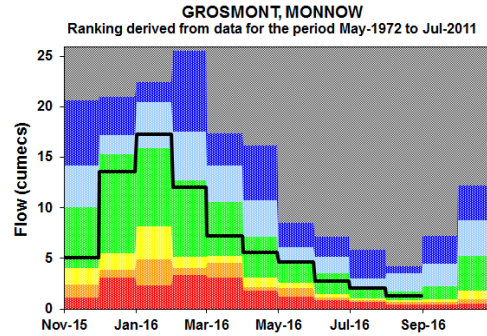
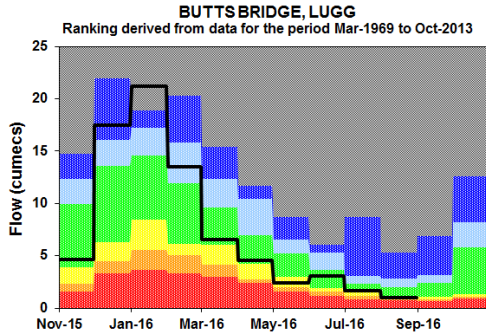
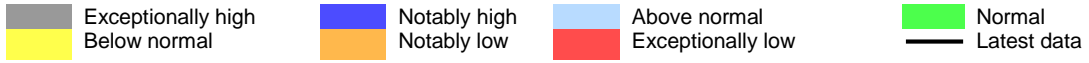
SITE NAME	RIVER	August 2016			August 2015		August LTA		
		Class	% of LTA	Flow (m3/s)	% of LTA	Flow (m3/s)	LTA	Monthly Min (m3/s)	Monthly Max (m3/s)
<b>River Flow Sites : South East Area</b>									
Butts Bridge	Lugg	Below normal	53%	1.01	51%	0.96	1.90	0.51	6.97
Grosmont	Monnow	Normal	76%	1.29	79%	1.34	1.69	0.36	8.17
Pont ar Yscir	Yscir	Normal	93%	0.67	156%	1.12	0.72	0.10	3.23
Pontypridd	Taff	Above normal	143%	15.86	158%	17.49	11.10	2.29	49.00
Redbrook	Wye	Normal	94%	24.30	71%	18.48	25.95	5.18	79.70
Rhiwderin	Ebbw	Normal	74%	2.48	116%	3.88	3.35	0.93	14.30
St Fagans	Ely	Above normal	150%	3.50	155%	3.62	2.34	0.46	11.30
Trostrey Weir	Usk	Normal	102%	9.13	145%	13.01	8.96	2.70	27.50
<b>River Flow Sites : North Area</b>									
Bodfari	Wheeler	Normal	88%	0.35	65%	0.26	0.40	0.19	0.87
Bodffordd	Cefni	Normal	67%	0.06	33%	0.03	0.09	0.00	0.36
Brynkinalt Weir	Ceiriog	Normal	61%	0.69	105%	2.17	1.13	0.18	5.20
Cwmlanerch	Conwy	Normal	127%	14.45	98%	11.22	11.41	0.73	37.40
Cynefail	Gelyn	Normal	123%	0.48	113%	0.44	0.39	0.03	1.09
Dol y Bont	Leri	N/A	N/A	N/A	N/A	N/A	1.03	0.08	3.00
Druid	Alwen	Normal	73%	1.55	79%	1.67	2.12	0.39	5.90
Dyfi bridge	Dyfi	N/A	N/A	N/A	N/A	N/A	12.52	0.66	40.40
Garndolbenmaen	Dwyfor	Normal	121%	2.49	105%	2.17	2.06	0.12	6.25
Manley Hall	Dee	Normal	94%	14.33	90%	13.79	15.32	7.08	38.60
Pont y Cambwll	Clwyd	Normal	66%	1.31	44%	0.87	1.99	0.51	7.18
Ruthin Weir	Clwyd	Normal	108%	0.28	27%	0.07	0.26	0.05	0.74
<b>River Flow Sites : South West Area</b>									
Capel Dewi	Tywi	Normal	79%	23.20	150%	28.65	19.16	2.70	78.50
Clog y Fran	Taf	Above normal	118%	2.49	158%	5.60	3.54	0.33	18.30
Coytrahen	Llynfi	Above normal	160%	2.57	134%	2.15	1.61	0.26	6.06
Felin Mynachdy	Cothi	Normal	81%	5.08	153%	9.59	6.25	0.36	23.40
Glanteifi	Teifi	Normal	63%	8.52	101%	13.69	13.56	1.13	77.30
Keepers Lodge	Ewenny	Above normal	167%	1.74	153%	1.59	1.04	0.22	4.24
Marcroft	Afan	Above normal	174%	6.52	190%	6.14	3.75	0.55	13.30
Pont Llolwyn	Ystwyth	Above normal	146%	4.55	87%	2.69	3.11	0.18	8.57
Treffgarne *	Western Cleddau	Normal	96%	1.28	125%	1.67	1.34	0.24	5.54
Resolven	Neath	Above normal	174%	10.04	172%	9.90	5.76	0.40	22.50
Tir-y-Dail	Loughor	Above normal	120%	1.46	175%	2.13	1.22	0.18	4.40
Ynystanglws	Tawe	Above normal	158%	12.32	197%	15.37	7.80	1.07	28.60

**Figure 11: Monthly mean river flow for August with comparison against previous year expressed as a percentage of the August long term average and classed relative to analysis of historic August monthly means. (Source: Natural Resources Wales). (\* For Treffgarne station the LTAs were derived using scaled historical flows (1965-2003) from the downstream station at Prendergast Mill.)**



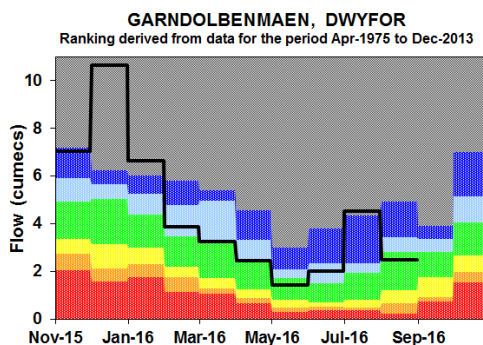
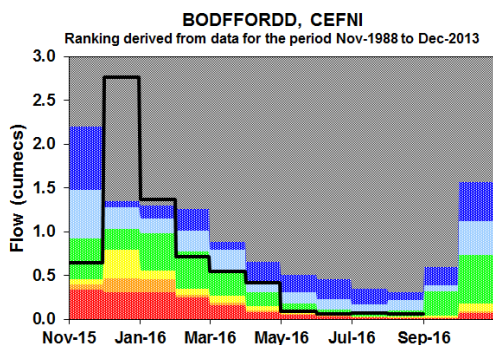
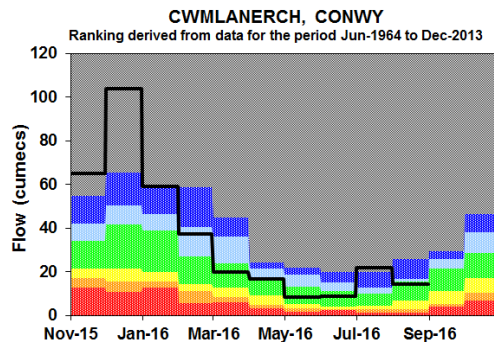
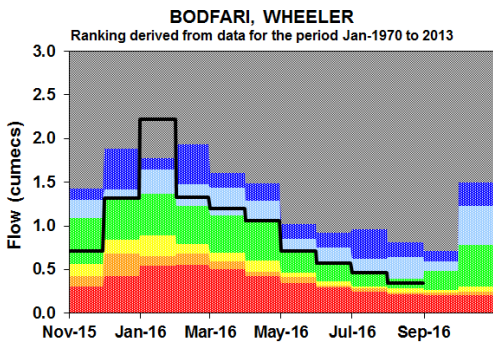
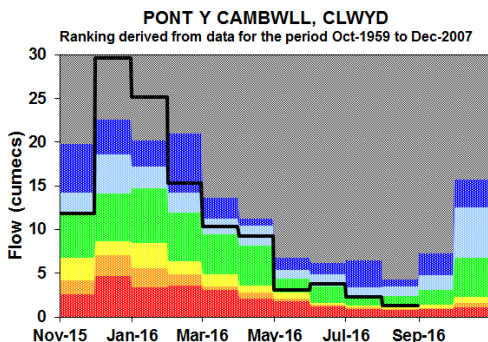
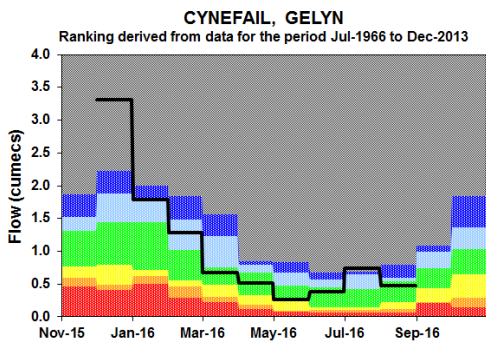
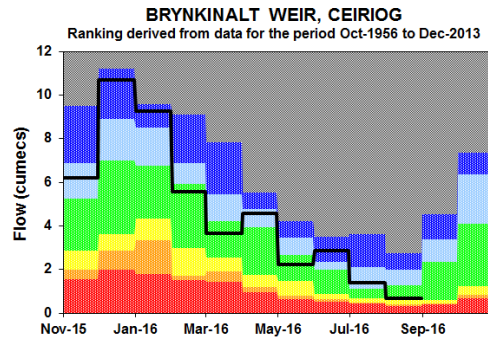
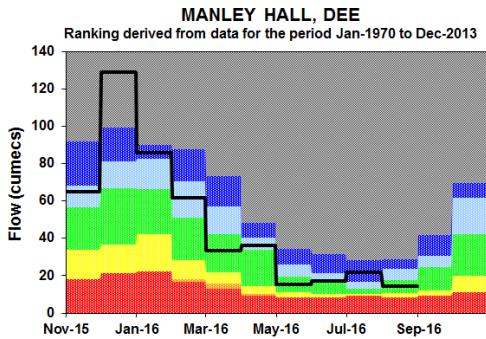
## River Flow Charts

Figure 12: River Flow Charts: South East Wales



Monthly mean river flows for the last 10 months classed relative to the analysis of historic river levels (*Source: Natural Resources Wales*).

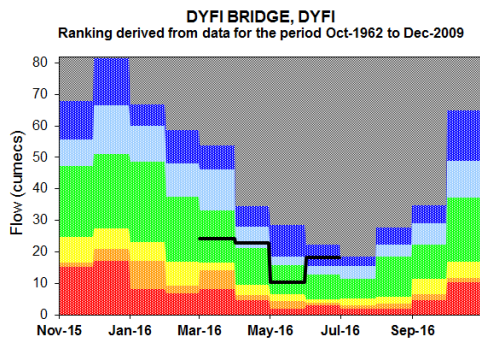
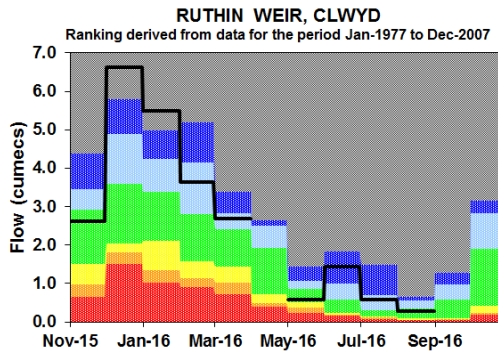
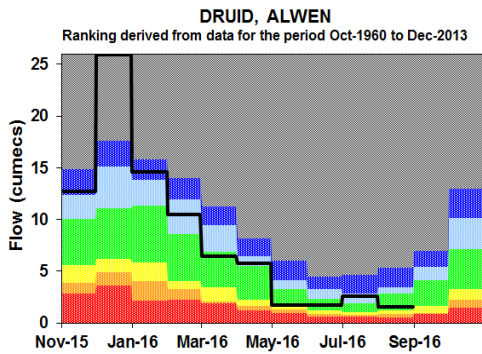
**Figure 13: River Flow Charts: North Wales**



**Monthly mean river flows for the last 10 months classed relative to the analysis of historic river levels (Source: Natural Resources Wales).** (Please note that there was no data available for River Gelyn at Cynefail in November 2015)

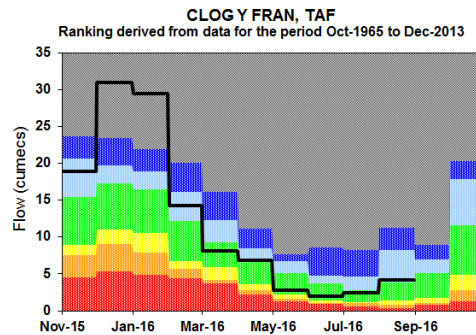
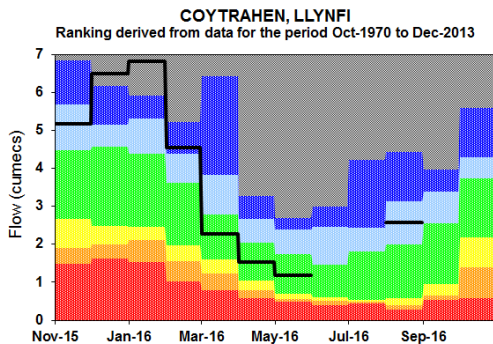
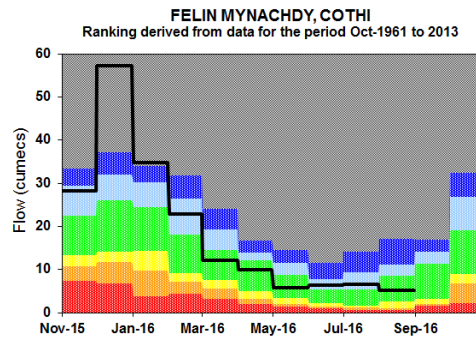
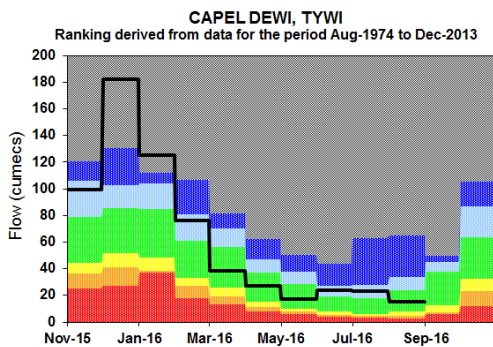


[Return to Summary](#)



(Please note that there were no data available for River Dyfi at Dyfi Bridge before March 2016 and July and August 2016. For River Clwyd at Ruthin Weir there was no data available for April 2016)

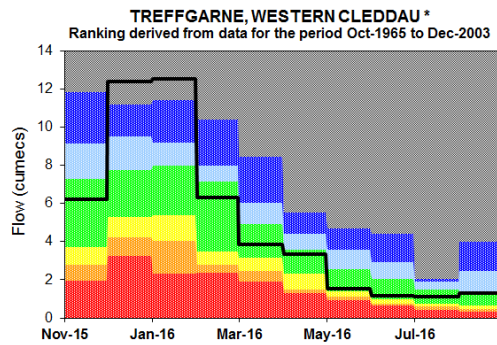
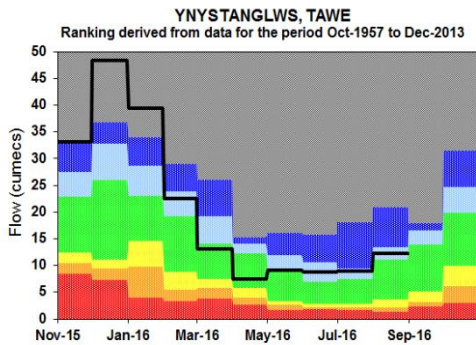
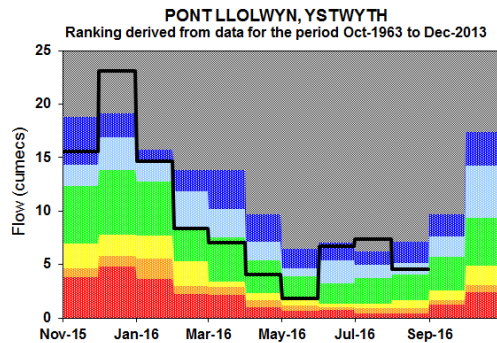
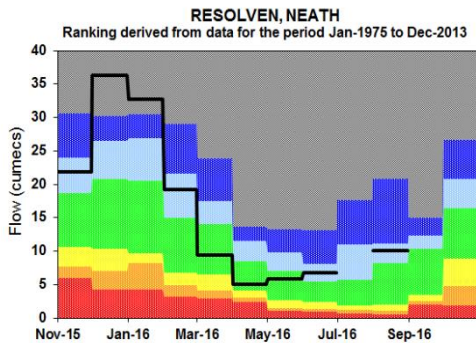
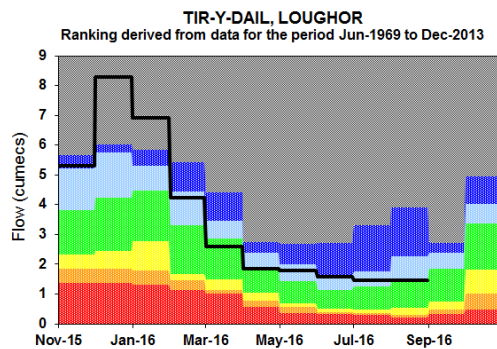
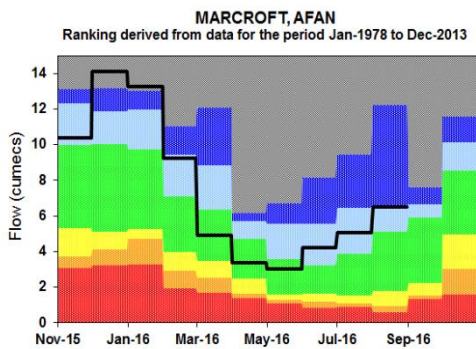
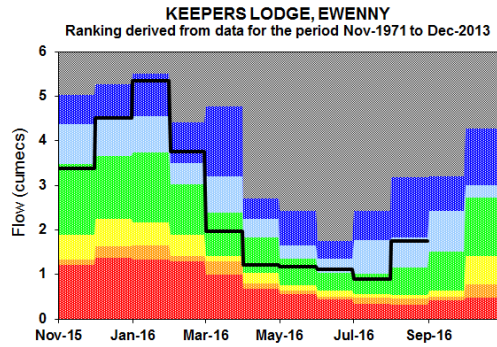
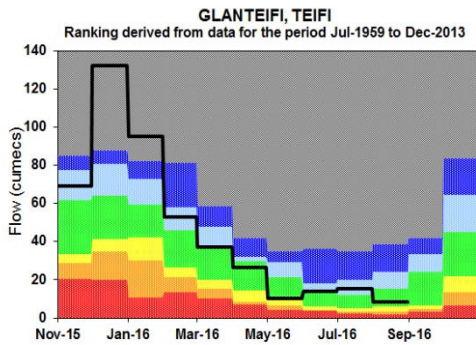
**Figure 14: River Flow Charts: South West Wales**



(Please note that there was no data for Coytrahen for June and July 2016 due to the river works)



[Return to Summary](#)



**Monthly mean river flows for the last 10 months classed relative to the analysis of historic river levels. (Source: Natural Resources Wales).**

(\* Please note that for Treffgarne station the ranking bands were derived using scaled historical flows (1965-2003) from the downstream station at Prendergast Mill. There were no data for Resolven for July 2016 due to river works )

## Groundwater Levels

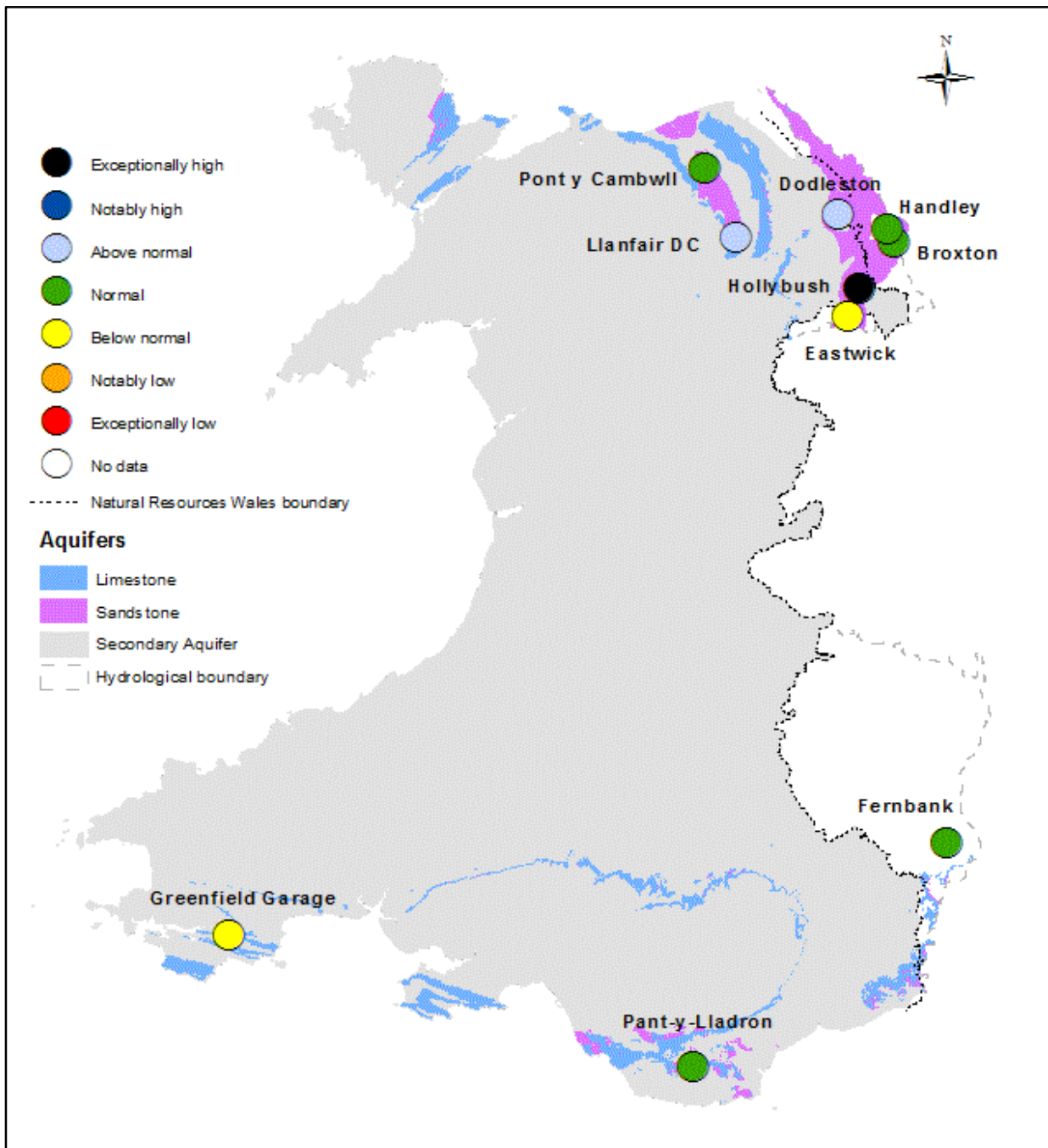
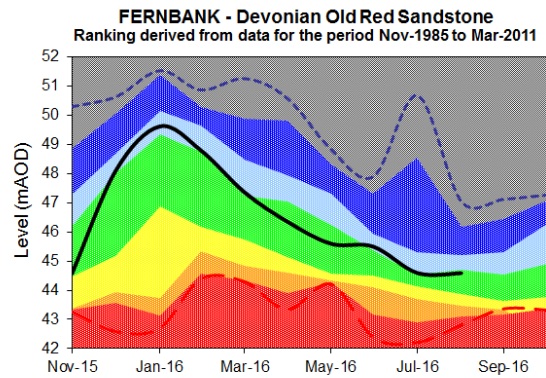
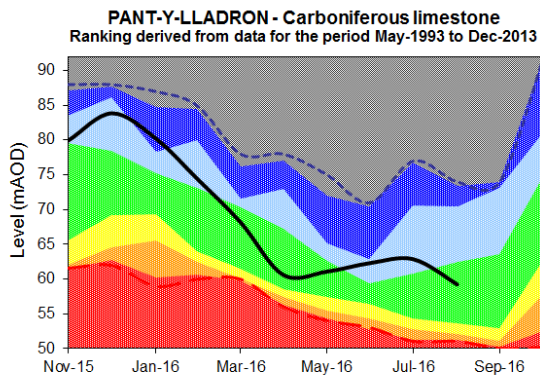
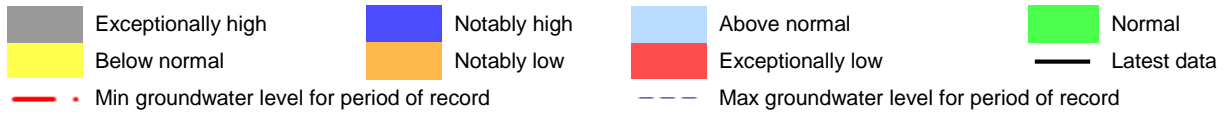


Figure 15: Groundwater levels at the end of month classed relative to an analysis of historic August groundwater levels (Source: Natural Resources Wales and Environment Agency).

[Return to Summary](#)

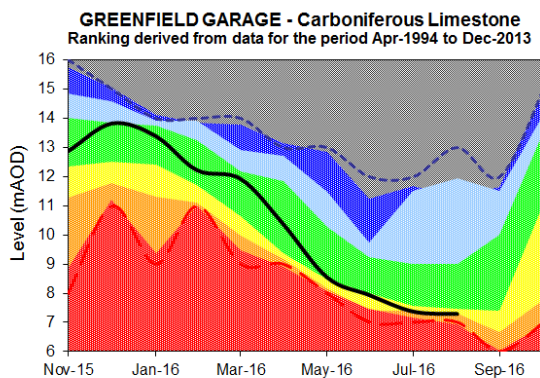
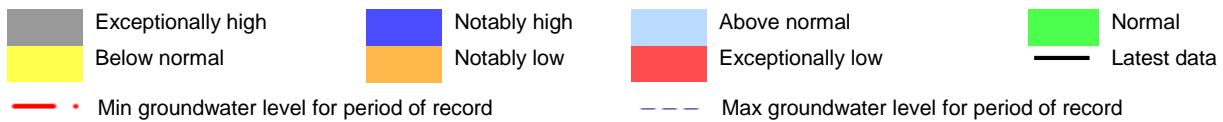
## Groundwater charts

**Figure 16: Groundwater level charts: South East Wales**



End of month groundwater levels for the past 10 months for index sites (Source: Natural Resources Wales).

**Figure 17: Groundwater level charts: South West Wales**

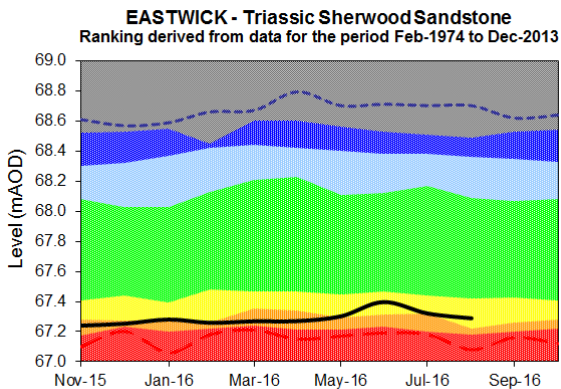
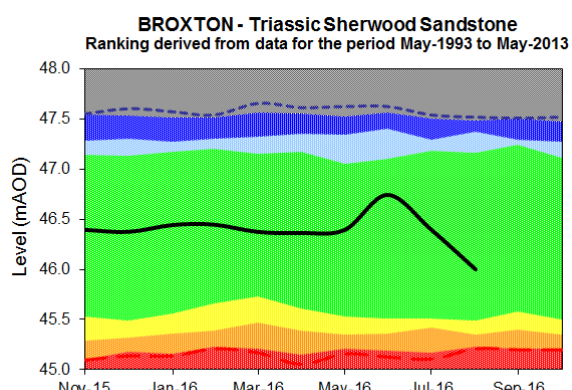
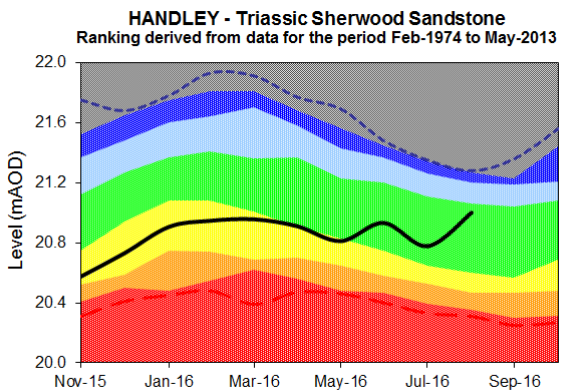
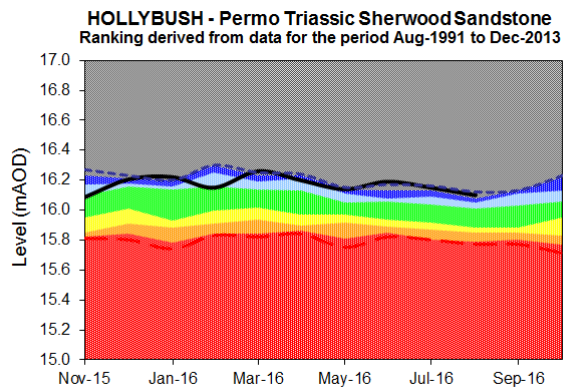
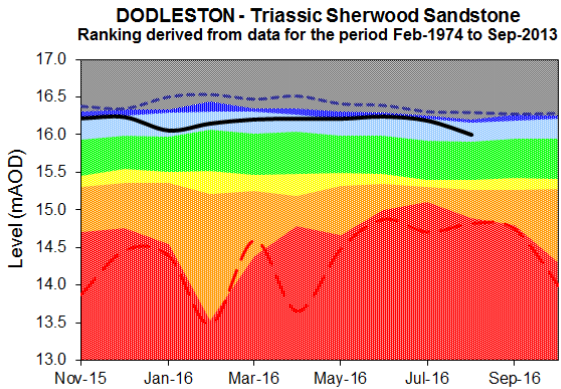
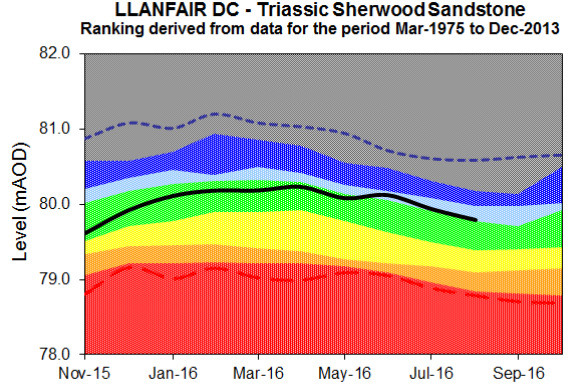
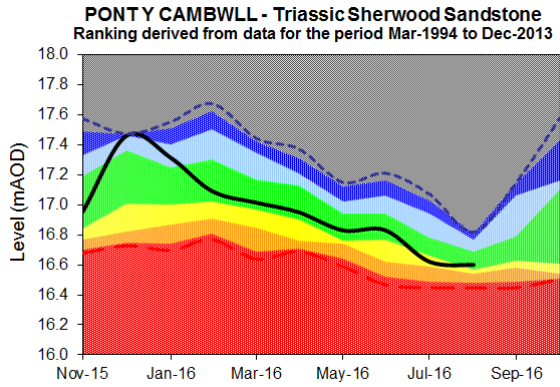
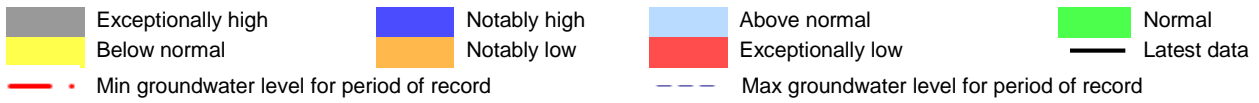


End of month groundwater levels for the past 10 months for index sites (Source: Natural Resources Wales).



[Return to Summary](#)

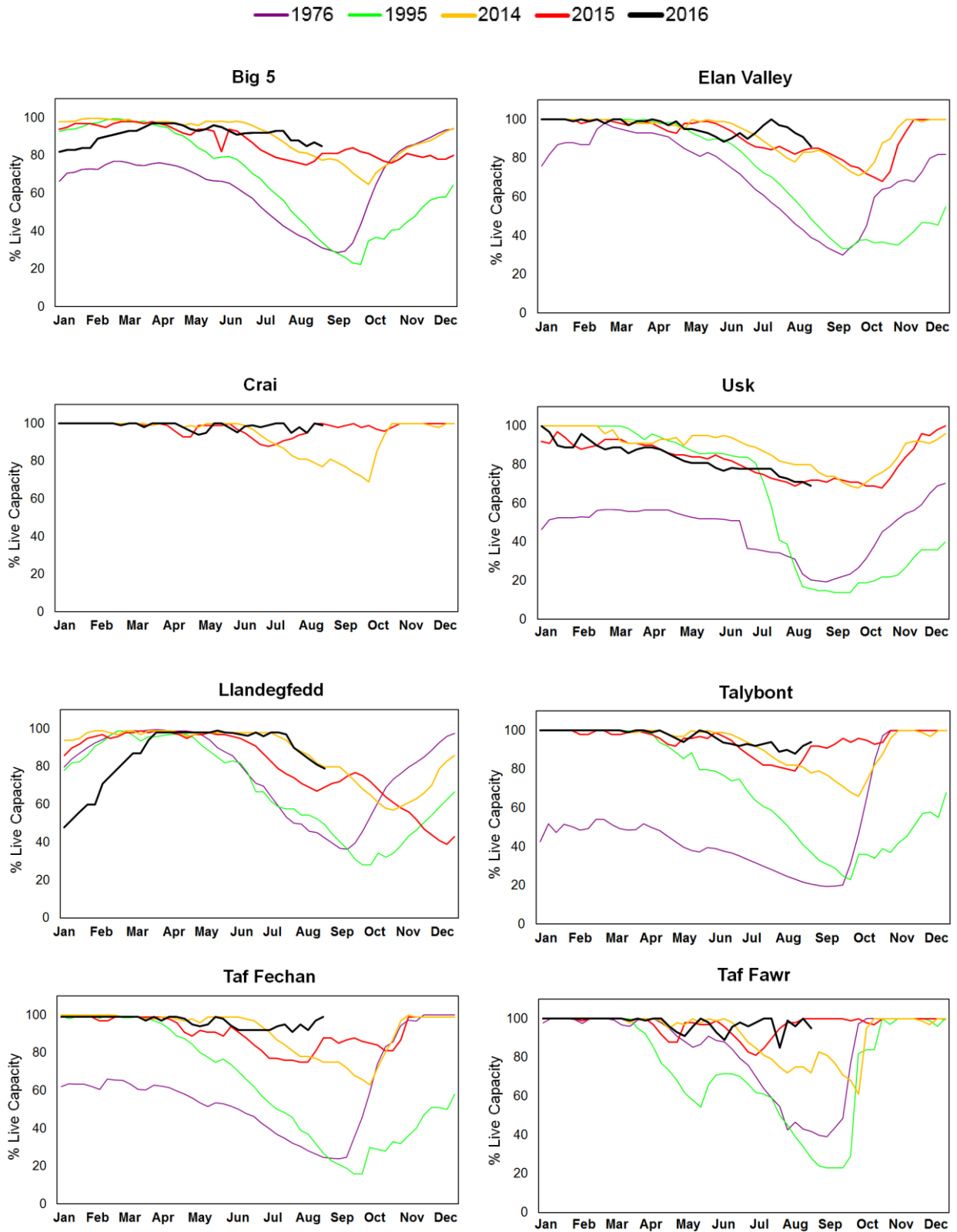
**Figure 18: Groundwater level charts: North Wales**



End of month groundwater levels for the past 10 months for index sites (Source: Natural Resources Wales and Environment Agency).

## Reservoir Storage

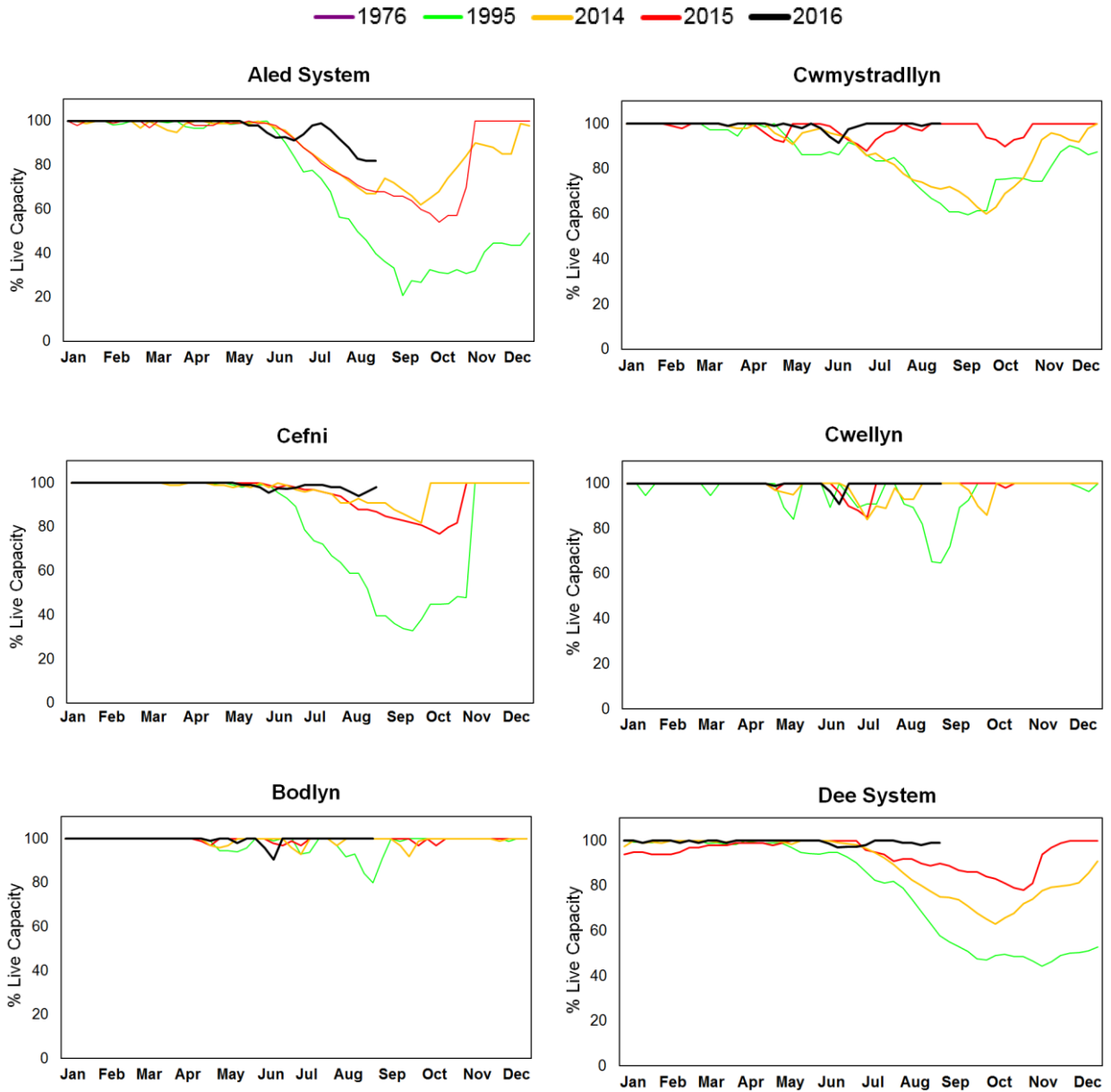
Figure 19: Reservoir charts: South East Wales



Weekly reservoir stocks for Natural Resources Wales index sites (Source: Welsh Water)

[Return to Summary](#)

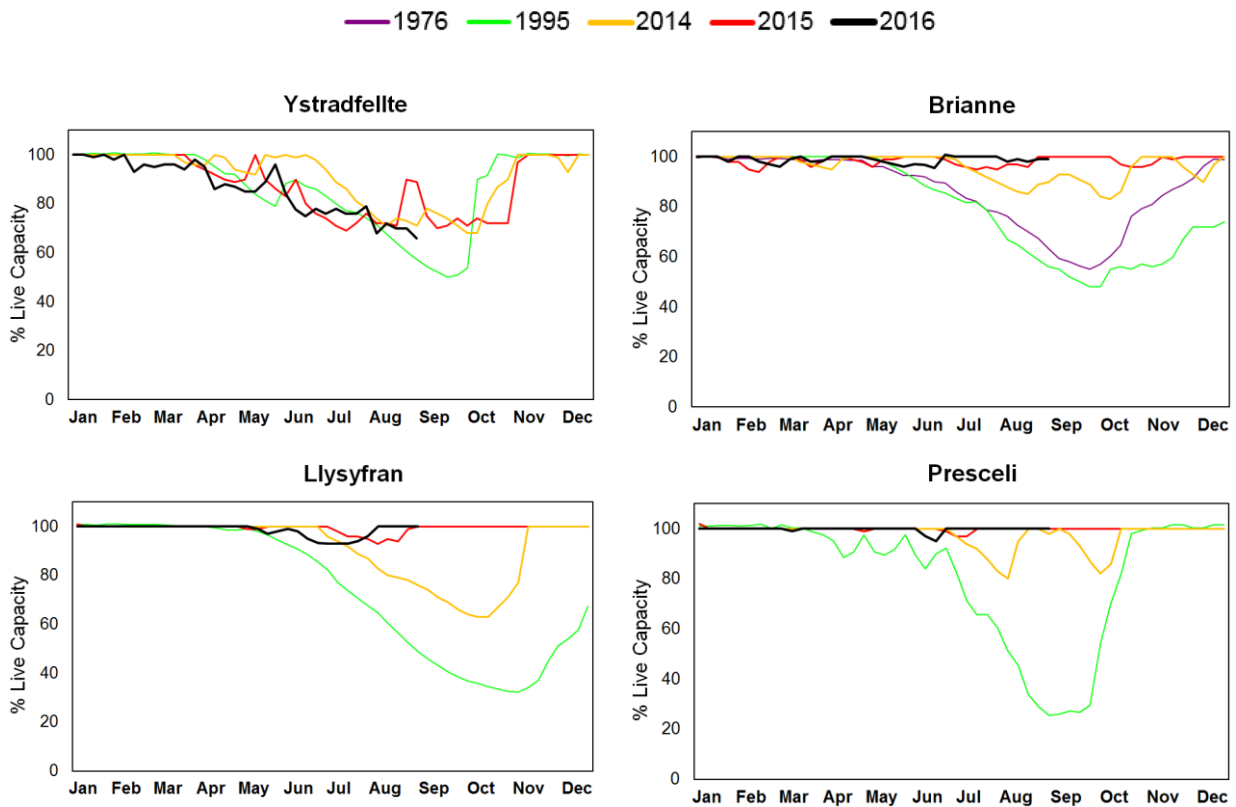
**Figure 20: Reservoirs charts: North Wales**



Weekly reservoir stocks for Natural Resources Wales index sites (Source: Welsh Water).

[Return to Summary](#)

**Figure 21: Reservoirs charts: South West Wales**



**Weekly reservoir stocks for Natural Resources Wales index sites (Source: Welsh Water).**

## Glossary

Term	Definition
Aquifer	A geological formation able to store and transmit water.
Areal average rainfall	The estimated average depth of rainfall over a defined area. Expressed in depth of water (mm).
Effective rainfall	The rainfall available to percolate into the soil or produce river flow. Expressed in depth of water (mm).
Groundwater	The water found in an aquifer
Meteorological Office Rainfall and Evaporation Calculating System (MORECS)	The Met Office provides climate data for grid squares measuring 40km by 40km across the UK using MORECS
Recharge	The process of increasing the water stored in the saturated zone of an aquifer. Expressed in depth of water (mm).
Reservoir live capacity	The reservoir capacity normally usable for storage to meet established reservoir operating requirements. It is the total capacity less that not available because of operating agreements or physical restrictions. Only under abnormal conditions, such as a severe water shortage might this additional water be extracted.
Soil moisture deficit (SMD)	The difference between the amount of water actually in the soil and the amount of water that the soil can hold. Expressed in depth of water (mm).

### Categories

Exceptionally high	Value likely to fall within this band 5% of the time
Notably high	Value likely to fall within this band 8% of the time
Above normal	Value likely to fall within this band 15% of the time
Normal	Value likely to fall within this band 44% of the time
Below normal	Value likely to fall within this band 15% of the time
Notably low	Value likely to fall within this band 8% of the time
Exceptionally low	Value likely to fall within this band 5% of the time

### Units

cumecs	Cubic metres per second ( $m^3 s^{-1}$ )
mAOD	Metres Above Ordnance Datum (mean sea level at Newlyn Cornwall).